

Osteopontin Antibody
Rabbit mAb
Catalog # AP90372**Specification**

Osteopontin Antibody - Product Information

Application	WB, FC, ICC
Primary Accession	P10451
Clonality	Monoclonal
Other Names	
BNSP; Bone sialoprotein 1; bone sialoprotein I; BSPI; early T-lymphocyte activation 1; ETA-1; Nephropontin; OPN; Osteopontin; OSTP; Secreted phosphoprotein 1;	
Isotype	Rabbit IgG
Host	Rabbit
Calculated MW	35423 Da

Osteopontin Antibody - Additional Information

Dilution	WB~~1:1000 FC~~1:10~50 ICC~~N/A
Purification	Affinity-chromatography
Immunogen	A synthesized peptide derived from human Osteopontin
Description	osteopontin Binds tightly to hydroxyapatite. Appears to form an integral part of the mineralized matrix. Probably important to cell-matrix interaction. Belongs to the osteopontin family. Ligand for integrin alpha-V/beta-3. 4 isoforms of the human protein are produced by alternative splicing.
Storage Condition and Buffer	Rabbit IgG in phosphate buffered saline , pH 7.4, 150mM NaCl, 0.02% sodium azide and 50% glycerol. Store at +4°C short term. Store at -20°C long term. Avoid freeze / thaw cycle.

Osteopontin Antibody - Protein Information**Name** SPP1**Synonyms** BNSP, OPN**Function**

Major non-collagenous bone protein that binds tightly to hydroxyapatite. Appears to form an integral part of the mineralized matrix. Probably important to cell-matrix interaction.

Cellular Location

Secreted

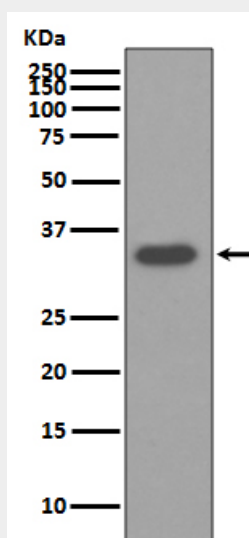
Tissue Location

Detected in cerebrospinal fluid and urine (at protein level) (PubMed:25326458, PubMed:36213313, PubMed:37453717) Bone. Found in plasma.

Osteopontin Antibody - Protocols

Provided below are standard protocols that you may find useful for product applications.

- [Western Blot](#)
- [Blocking Peptides](#)
- [Dot Blot](#)
- [Immunohistochemistry](#)
- [Immunofluorescence](#)
- [Immunoprecipitation](#)
- [Flow Cytometry](#)
- [Cell Culture](#)

Osteopontin Antibody - Images

Western blot analysis of Osteopontin expression in HepG2 cell lysate.